



LANGSTON UNIVERSITY

Student Achievement Data

Prepared by the Office of Institutional Research and Planning, 304 Page Hall

Updated: 9-30-2023

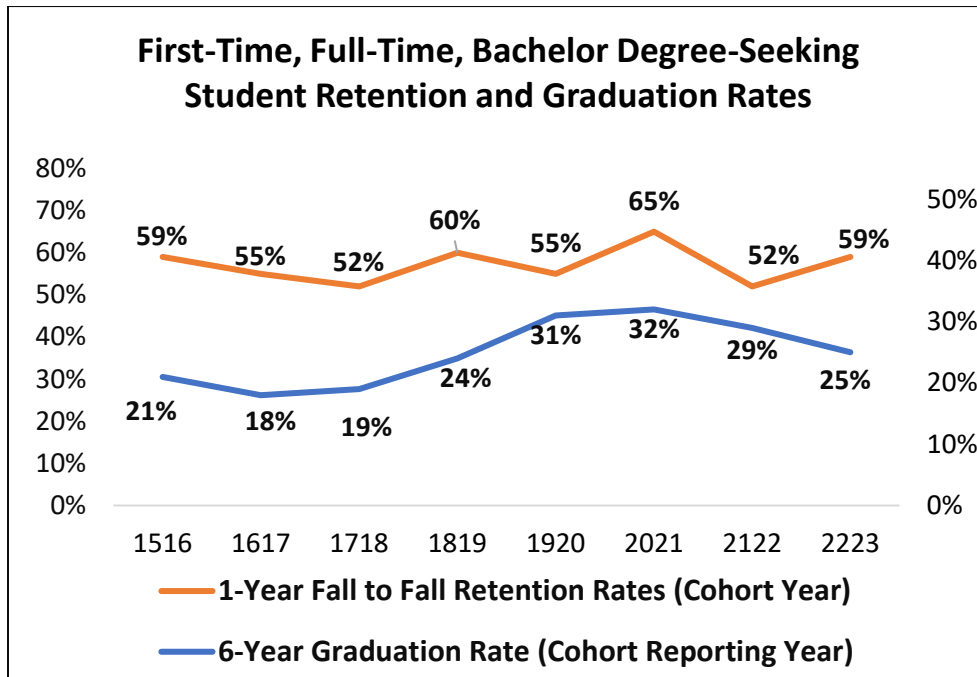
School Level 1-Year Retention Data for ALL First-Time, Full-Time Freshmen

Grouped by School	1-Year Retention Rates: Students Retained at LU								
	2014 to 2015	2015 to 2016	2016 to 2017	2017 to 2018	2018 to 2019	2019 to 2020	2020 to 2021	2021 to 2022	2022 to 2023
SHERMAN LEWIS SCHOOL OF AGRICULTURE AND APPLIED SCIENCES	33%	45%	62%	52%	62%	41%	67%	61%	64%
SCHOOL OF ARTS AND SCIENCES	50%	57%	56%	45%	43%	51%	46%	59%	63%
SCHOOL OF BUSINESS	54%	61%	54%	46%	62%	40%	50%	46%	58%
SCHOOL OF EDUCATION AND BEHAVIORAL STUDIES	54%	56%	59%	41%	53%	57%	67%	33%	55%
SCHOOL OF NURSING AND HEALTH PROFESSIONS	67%	65%	62%	60%	72%	53%	62%	57%	57%
*SCHOOL OF PHYSICAL THERAPY	97%	100%	100%	100%	100%	100%	92%	92%	100%

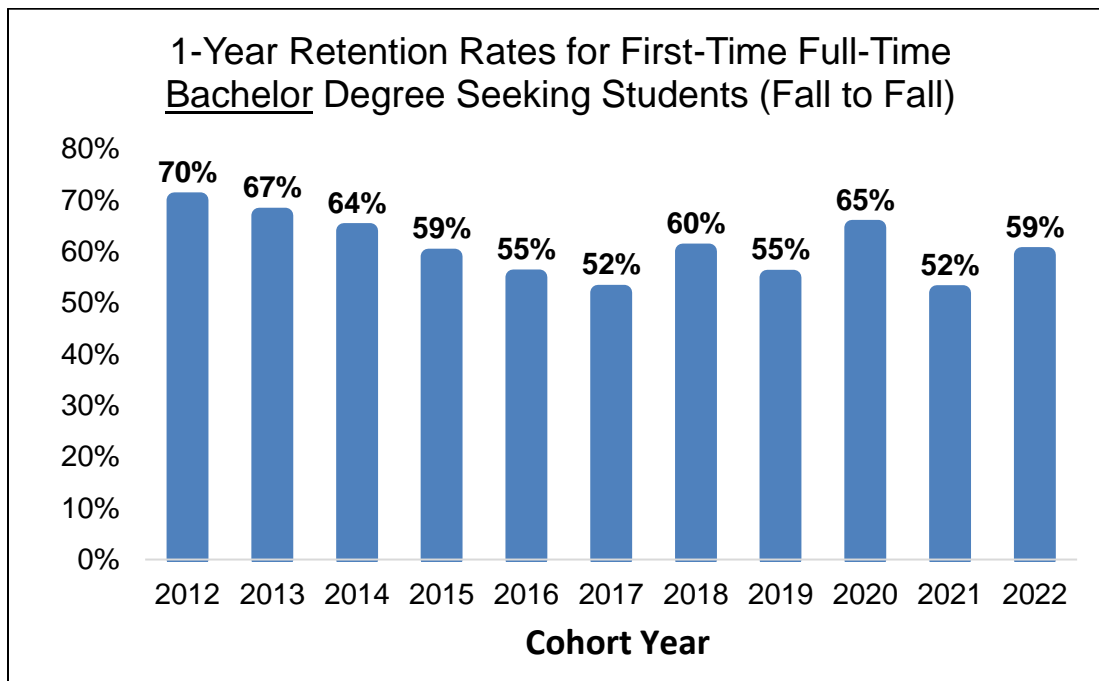
**Note: One-year retention rates for the School of Physical Therapy are tracked in accordance with CAPTE accreditation requirements.*

Source: First-time, full-time freshmen retained at LU the following fall term as of census date.

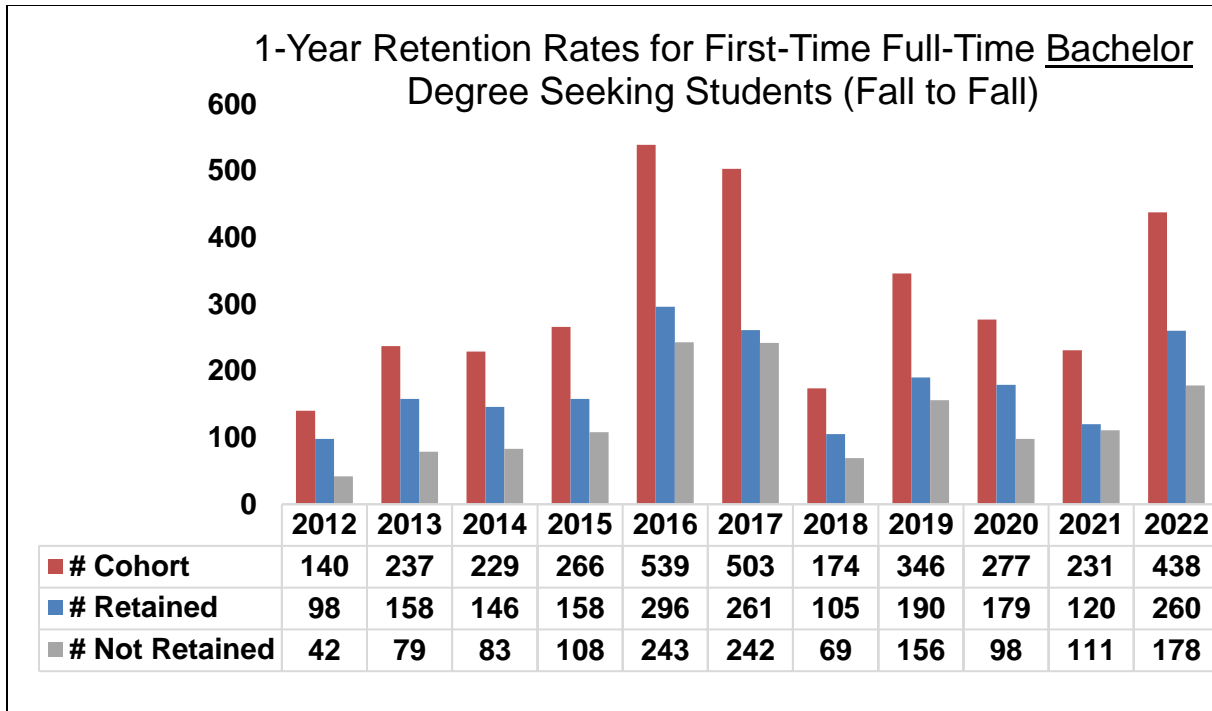
Retention and Graduation Rates



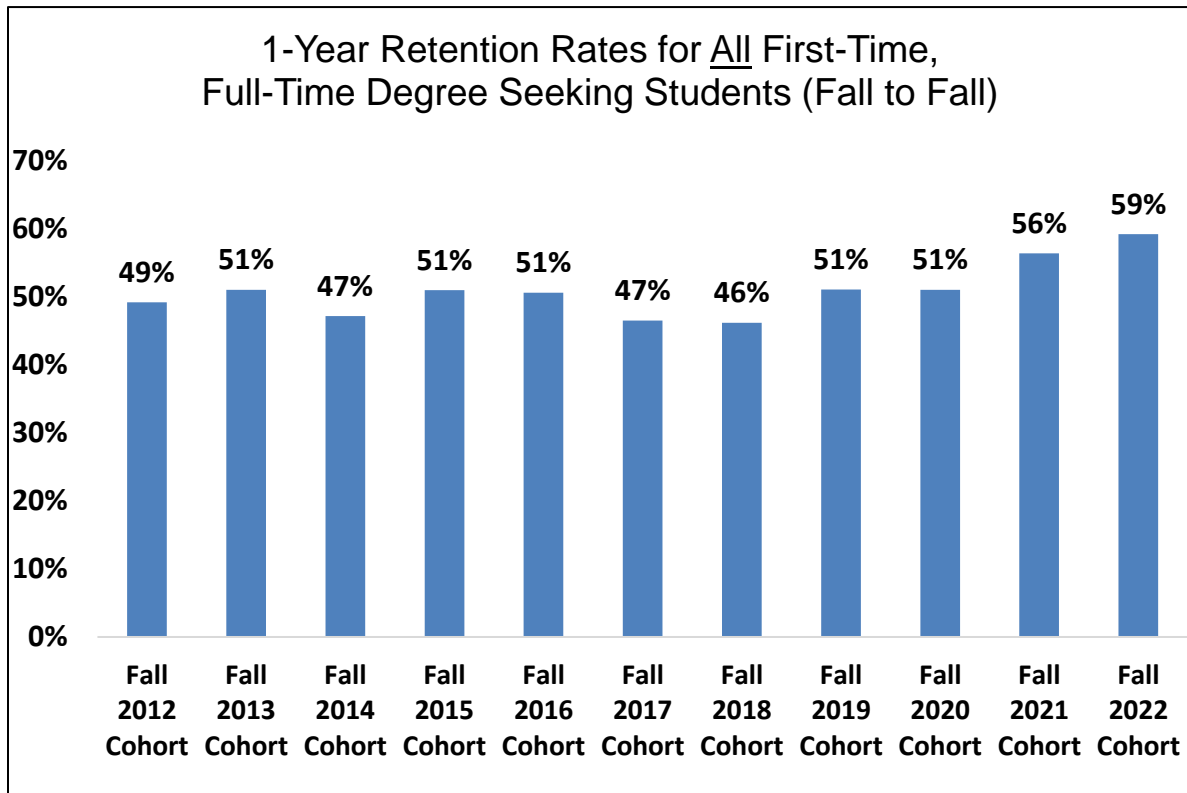
Source: Integrated Postsecondary Education Data System (IPEDS)—First-Time, Full-Time Bachelor Degree-Seeking Freshmen Retained the following fall term as of census date; Source: Integrated Postsecondary Education Data System (IPEDS) - Total Completers within 150%



Source: Integrated Postsecondary Education Data System (IPEDS)—First-Time, Full-Time Bachelor Degree-Seeking Freshmen Retained the following fall term as of census date.

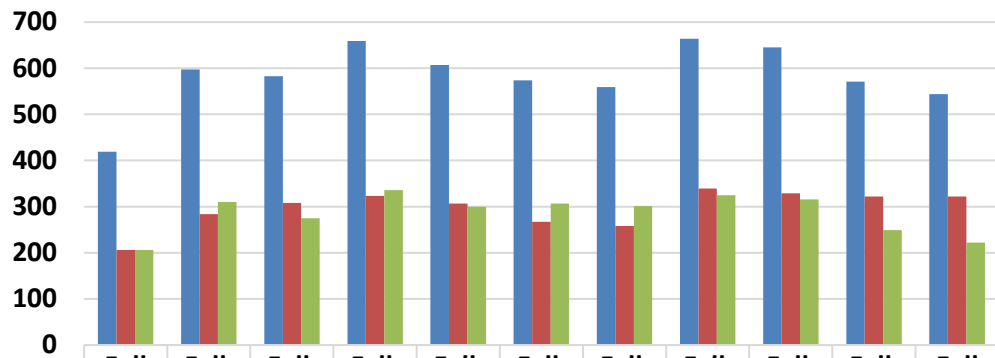


Source: Integrated Postsecondary Education Data System (IPEDS)—First-Time, Full-Time Bachelor Degree-Seeking Freshmen Retained the following fall term as of census date.



Source: Fall first-time, full-time freshmen retained at LU the following fall term as of census date.

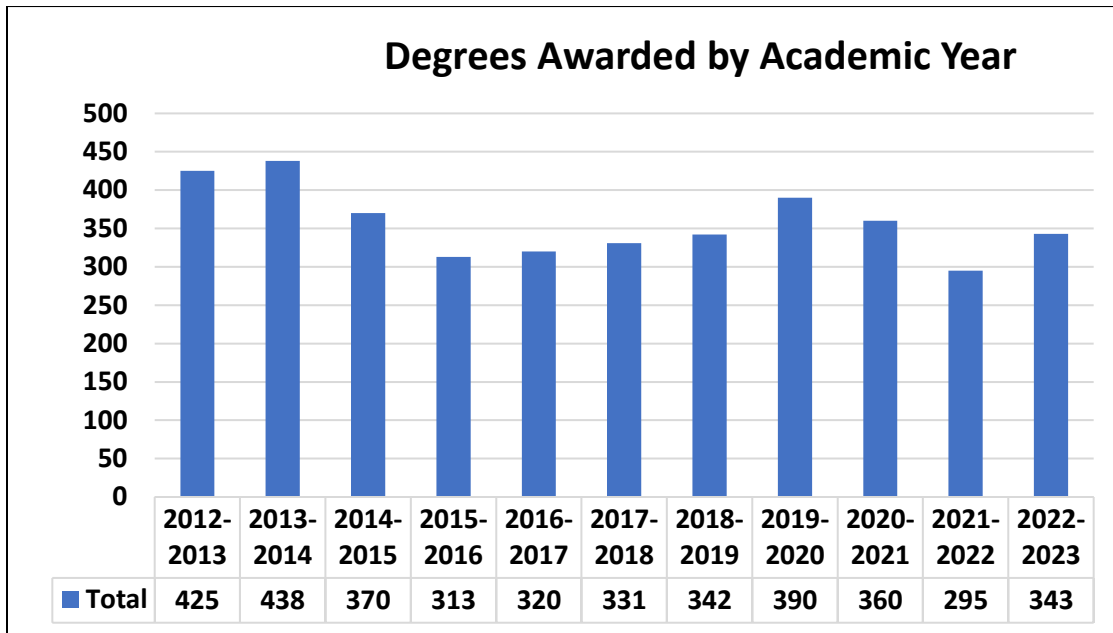
1-Year Retention Rates for All First-Time,
Full-Time Degree Seeking Students (Fall to Fall)



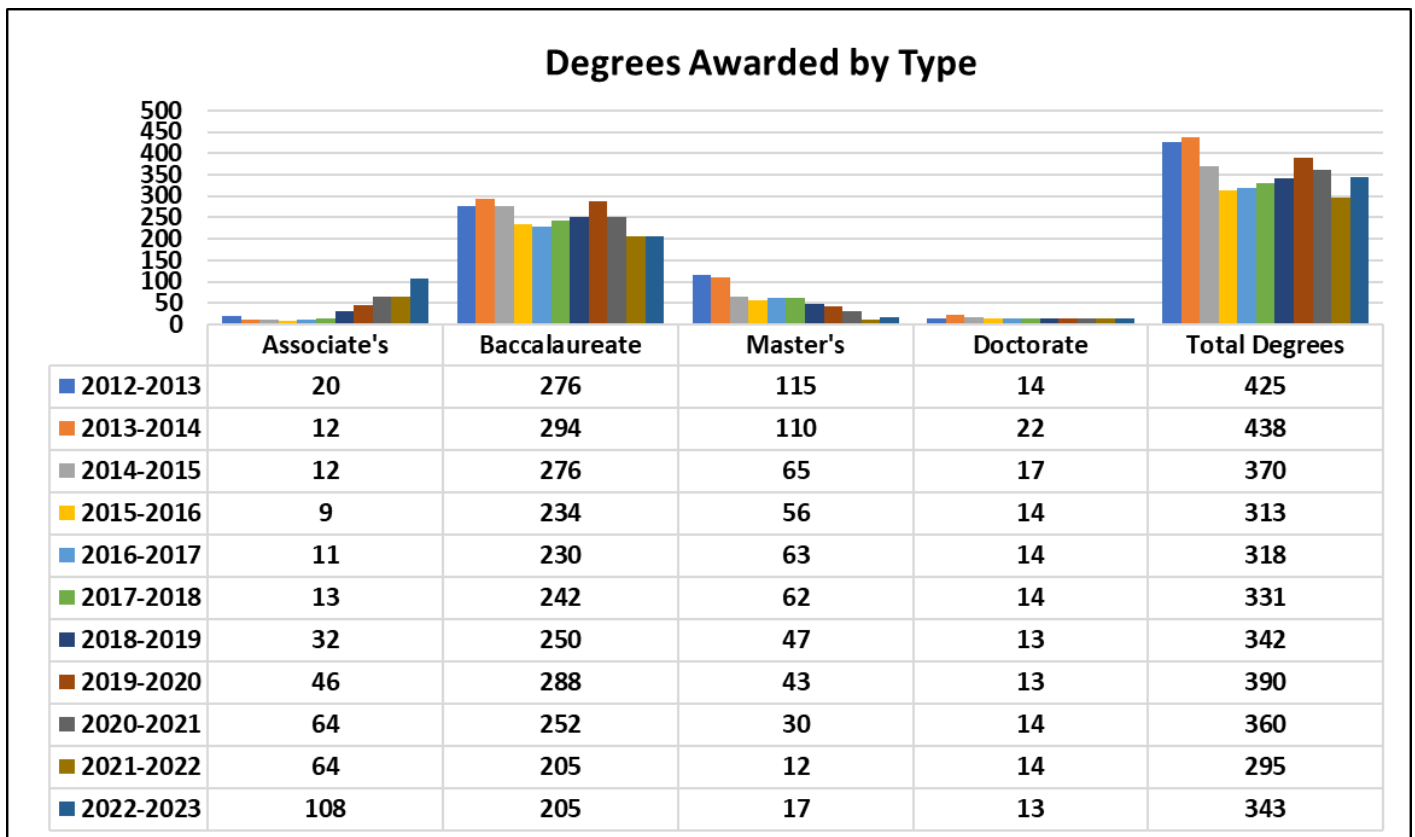
	Fall 2012	Fall 2013	Fall 2014	Fall 2015	Fall 2016	Fall 2017	Fall 2018	Fall 2019	Fall 2020	Fall 2021	Fall 2022
■ Cohort Total	419	597	583	659	607	574	559	664	645	571	544
■ # Retained	206	284	308	323	307	267	258	339	329	322	322
■ # Not Retained	206	310	275	336	300	307	301	325	316	249	222

Source: Fall first-time, full-time freshmen retained at LU the following fall term as of census date.

Graduation Data



Source: Integrated Postsecondary Education Data System (IPEDS) Completions Survey



Source: Integrated Postsecondary Education Data System (IPEDS) Completions Survey

Degrees Awarded by School

Graduates by School	2017-2018	2018-2019	2019-2020	2020-2021	2021-2022	2022-2023	Total
Sherman Lewis School of Agriculture and Applied Sciences	28	23	30	14	13	16	124
School of Arts and Sciences	65	80	101	110	116	159	631
School of Business	40	53	35	37	32	37	234
School of Education and Behavioral Sciences	136	136	136	128	69	66	671
School of Nursing and Health Professions	48	37	75	57	51	52	320
School of Physical Therapy	14	13	13	14	14	13	81
TOTAL	331	342	390	360	295	343	2061

Source: Integrated Postsecondary Education Data System (IPEDS) Completions Survey

Degrees Awarded by School and Program

SL SCHOOL OF AGRICULTURE AND APPLIED SCIENCES	2017-2018	2018-2019	2019-2020	2020-2021	2021-2022	2022-2023	Total
AGRICULTURAL SCIENCE	16	14	18	10	9	11	78
CHILD DEVELOPMENT	2	3	4	1	2	0	12
FAMILY AND CONSUMER SCIENCES	10	6	8	3	2	5	34
Total for School	28	23	30	14	13	16	124

Source: Integrated Postsecondary Education Data System (IPEDS) Completions Survey

SCHOOL OF ARTS AND SCIENCES	2017-2018	2018-2019	2019-2020	2020-2021	2021-2022	2022-2023	Total
BIOLOGY	10	10	17	9	12	11	69
BROADCAST JOURNALISM	4	4	6	8	9	4	35
CHEMISTRY	1	1	1	2	0	0	5
CORRECTIONS - BS	15	17	16	19	26	20	113
CRIMINAL JUSTICE - AS	8	19	11	19	22	28	107
DRAFTING - AS	2	4	4	3	1	2	16
ELECTRONICS - AS	0	1	1	0	0	2	4
ENGLISH	3	4	2	2	2	1	14
GENERAL STUDIES	0	0	25	41	38	76	180
INTERNATIONAL STUDIES*	0	0	1	0	0	0	1
MATHEMATICS	3	2	0	0	0	0	5
MULTI-/INTERDISCIPLINARY STUDIES (ORG LEADERSHIP)	8	6	5	3	2	1	25
MUSIC EDUCATION	0	0	0	0	1	0	1
SECONDARY EDUCATION	1	1	1	0	0	5	8
SOCIOLOGY	4	9	7	1	2	6	29
TECHNOLOGY	6	3	4	3	1	3	20
Total for School	65	81	101	110	116	159	632

Source: Integrated Postsecondary Education Data System (IPEDS) Completions Survey

SCHOOL OF BUSINESS	2017-2018	2018-2019	2019-2020	2020-2021	2021-2022	2022-2023	Total
ACCOUNTANCY	3	0	0	1	1	0	5
BUSINESS ADMINISTRATION	29	37	31	24	26	28	175
COMPUTER SCIENCE	4	8	3	9	3	5	32
ENTREPRENEURSHIP	3	3	0	3	1	4	14
FINANCIAL PLANNING	1	5	1	0	1	0	8
Total for School	40	53	35	37	32	37	234

Source: Integrated Postsecondary Education Data System (IPEDS) Completions Survey

Degrees Awarded by School and Program

SCHOOL OF EDUCATION AND BEHAVIORAL SCIENCES	2017-2018	2018-2019	2019-2020	2020-2021	2021-2022	2022-2023	Total
EDUCATION MED	13	7	9	5	3	4	41
ELEMENTARY EDUCATION	1	2	0	3	0	2	8
HPER	19	31	31	46	20	23	170
LIBERAL EDUCATION	22	18	22	24	11	7	104
PSYCHOLOGY	29	33	33	26	23	18	162
REHABILITATION COUNSELING	44	37	34	22	8	9	154
REHABILITATION SERVICES	6	7	7	2	4	3	29
SPECIAL EDUCATION	0	0	0	0	0	0	0
URBAN EDUCATION	0	0	0	0	0	0	0
VISUAL REHABILITATION SVCS	2	0	0	0	0	0	2
Total for School	136	135	136	128	69	66	670

Source: Integrated Postsecondary Education Data System (IPEDS) Completions Survey

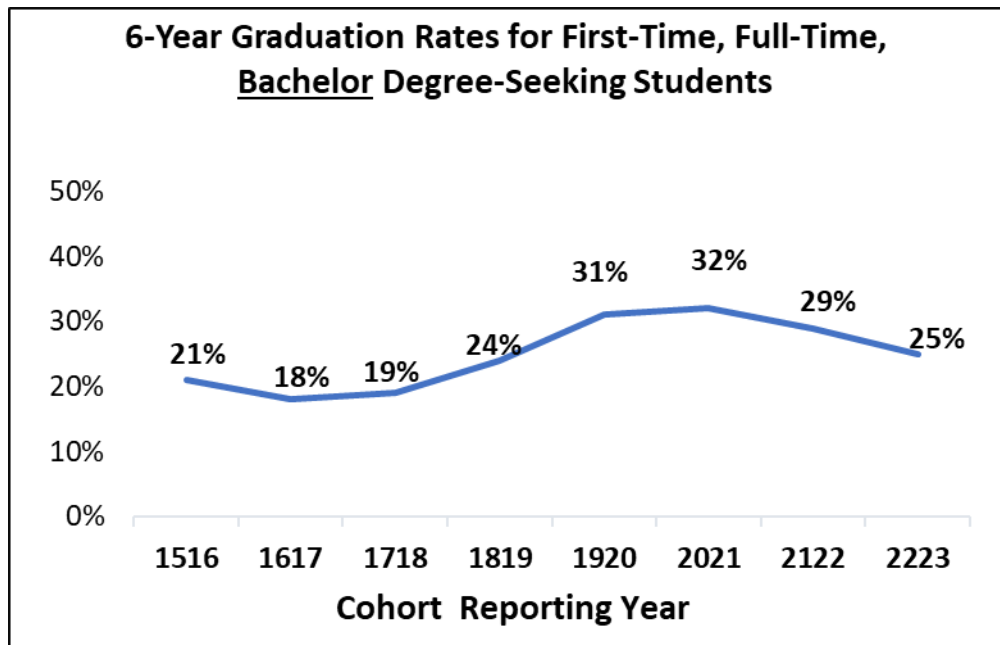
SCHOOL OF NURSING AND HEALTH PROFESSIONS	2017-2018	2018-2019	2019-2020	2020-2021	2021-2022	2022-2023	Total
HEALTH CARE ADMINISTRATION	12	7	13	4	6	4	46
NURSING	27	29	57	48	43	44	248
PUBLIC HEALTH	9	1	5	5	2	4	26
Total for School	48	37	75	57	51	52	320

Source: Integrated Postsecondary Education Data System (IPEDS) Completions Survey

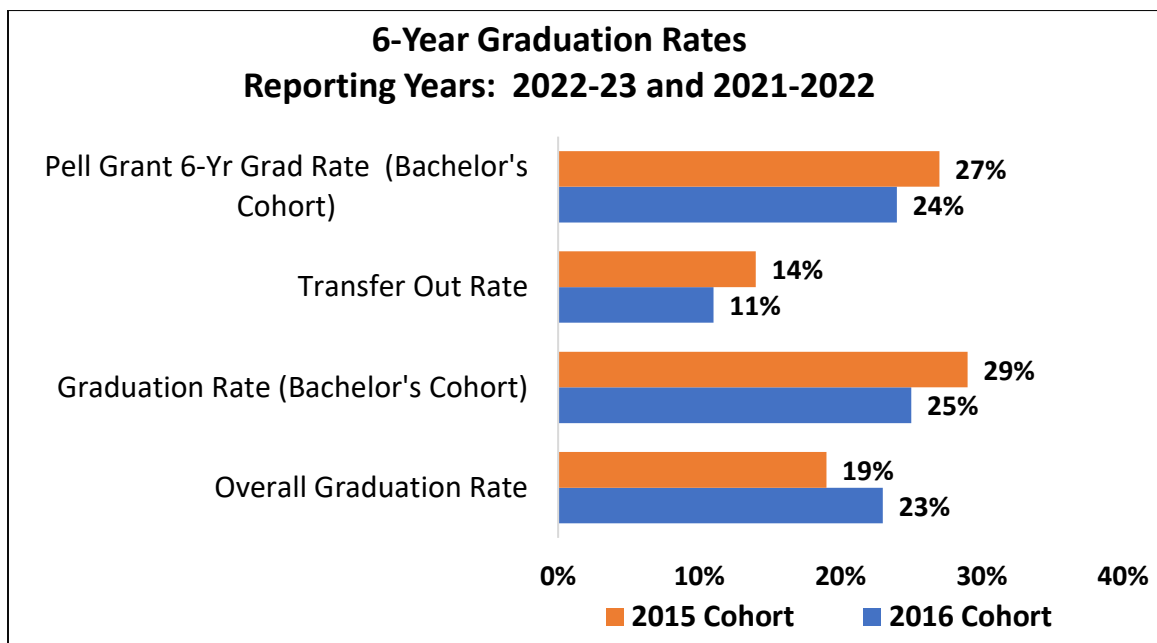
SCHOOL OF PHYSICAL THERAPY	2017-2018	2018-2019	2019-2020	2020-2021	2021-2022	2022-2023	Total
Total for School	14	13	13	14	14	13	81

Source: Integrated Postsecondary Education Data System (IPEDS) Completions Survey

Graduation Data



Source: Integrated Postsecondary Education Data System (IPEDS) - Total Completers within 150%



Source: Integrated Postsecondary Education Data System (IPEDS) - Total Completers within 150%

Langston University
4-, 5-, and 6-Year Graduation Rates by Gender and Race/Ethnicity
Reporting Year: 2022-23
(2016 Overall Bachelor's Cohort)

Gender	4-Year Graduation Rate	5-Year Graduation Rate	6-Year Graduation Rate
Men	8%	12%	13%
Women	24%	32%	34%

Race-Ethnicity	4-Year Graduation Rate	5-Year Graduation Rate	6-Year Graduation Rate
Nonresident alien	0%	4%	8%
Hispanic/Latino	100%	100%	100%
American Indian or Alaska Native	33%	33%	33%
Asian	100%	100%	100%
Black or African American	17%	25%	26%
Native Hawaiian or Other Pacific Islander			
White	55%	58%	58%
Two or more races	15%	21%	23%
Race and ethnicity unknown	9%	9%	9%

Overall Bachelor's Graduation Rates	18%	24%	25%
--	------------	------------	------------

Langston University
6-Year Graduation Rates by Gender and Race/Ethnicity
Reporting Year: 2022-23
(2016 Bachelor's Cohort)

Gender	First-Time Full-Time Cohort	Total Completers within 150%	6-Year Graduation Rate
Men	226	29	13%
Women	342	115	34%
Race-Ethnicity	First-Time Full-Time Cohort	Total Completers within 150%	6-Year Graduation Rate
Nonresident alien	25	2	8%
Hispanic/Latino	2	2	100%
American Indian or Alaska Native	6	2	33%
Asian	1	1	100%
Black or African American	390	101	26%
Native Hawaiian or Other Pacific Islander			
White	33	19	58%
Two or more races	47	11	23%
Race and ethnicity unknown	64	6	9%
Total	568	144	25%

Langston University
6-Year Graduation Rates by Gender and Race/Ethnicity
Reporting Year: 2022-23
(2016 Associate's Cohort)

Gender	First-Time Full-Time Cohort	Total Completers within 150%	6-Year Graduation Rate
Men	58	7	12%
Women	73	9	12%
Race-Ethnicity	First-Time Full-Time Cohort	Total Completers within 150%	6-Year Graduation Rate
Nonresident alien	10	0	0%
Hispanic/Latino			
American Indian or Alaska Native	1	0	0%
Asian			
Black or African American	86	16	19%
Native Hawaiian or Other Pacific Islander			
White	2	0	0%
Two or more races	7	0	0%
Race and ethnicity unknown	25	0	0%
Overall Other Graduation Rates	131	16	12%

Source: Integrated Postsecondary Education Data System (IPEDS) - Total Completers within 150% (3 years for Associates Completers).

1- and 2-Year Retention Rates by School and Program

1- and 2-Year Retention Rates - Sherman Lewis School of Agriculture and Applied Sciences

School/Program	Total Fall 2021 First-Time Full- Time Students	Total Fall 2022 First-Time Full- Time Students	1-Year Retention Rate				2-Year Retention Rate	
			FA21 Students Retained in FA22	% FA21 Students Retained in FA22	FA22 Students Retained in FA23	% FA22 Students Retained in FA23	FA21 Students Retained in FA23*	% FA21 Students Retained in FA23
Langston University	571	544	322	56%	322	59%	247	77%
Sherman Lewis School of Agriculture and Applied Sciences	36	36	22	61%	23	64%	18	82%
BS Agricultural Science	23	22	13	57%	16	73%	12	92%
BS Animal Science	7	0	5	71%	N/A	N/A	4	80%
AS Child Development	2	5	2	100%	4	80%	1	50%
BS Early Childhood Education	1	1	0	0%	1	100%	N/A	N/A
BS Family and Consumer Sciences	3	8	2	67%	2	25%	1	50%

Source: Fall First-Time, Full-Time Enrollment as of Census Date

*Note: 2-Year retention rates baseline cohorts are derived from fall 2021 students retained in fall 2022. Then a percentage is taken from this group who were retained in fall 2023.

School/Program	Total Fall 2020 First-Time Full- Time Students	Total Fall 2021 First-Time Full- Time Students	1-Year Retention Rate				2-Year Retention Rate	
			FA20 Students Retained in FA21	% FA20 Students Retained in FA21	FA21 Students Retained in FA22	% FA21 Students Retained in FA22	FA20 Students Retained in FA22*	% FA20 Students Retained in FA22
Langston University	645	571	329	51%	322	56%	216	66%
Sherman Lewis School of Agriculture and Applied Sciences	18	36	12	67%	22	61%	9	75%
BS Agricultural Science	11	23	9	82%	13	57%	6	67%
BS Animal Science	2	7	1	50%	5	71%	1	100%
AS Child Development	1	2	1	100%	2	100%	1	100%
BS Early Childhood Education	1	1	0	0%	0	0%	0	0%
BS Family and Consumer Sciences	3	3	1	33%	2	67%	1	100%

Source: Fall First-Time, Full-Time Enrollment as of Census Date

*Note: 2-Year retention rates baseline cohorts are derived from fall 2020 students retained in fall 2021. Then a percentage is calculated from this group who were retained in fall 2022.

1- and 2-Year Retention Rates - School of Arts and Sciences

School/Program	Total Fall 2021 First-Time Full- Time Students	Total Fall 2022 First-Time Full- Time Students	1-Year Retention Rate				2-Year Retention Rate	
			FA21 Students Retained in FA22	% FA21 Students Retained in FA22	FA22 Students Retained in FA23	% FA22 Students Retained in FA23	FA21 Students Retained in FA23*	% FA21 Students Retained in FA23
Langston University	571	544	322	56%	322	59%	247	77%
School of Arts and Sciences	399	195	235	59%	122	63%	181	77%
AA General Studies	326	66	191	59%	38	58%	148	77%
AS Criminal Justice	12	29	9	75%	17	59%	6	67%
AS Electronics	0	3	N/A	N/A	1	33%	N/A	N/A
BA Broadcast Journalism	10	14	6	60%	12	86%	5	83%
BA Sociology	2	7	1	50%	4	57%	1	100%
BAE Music Education	9	9	7	78%	8	89%	4	57%
BS Biology	24	37	11	46%	25	68%	11	100%
BS Chemistry	0	6	N/A	N/A	4	67%	N/A	N/A
BS Corrections	2	2	1	50%	2	100%	1	100%
BS Mathematics	1	1	1	100%	1	100%	1	100%
BS Technology	10	17	5	50%	9	53%	2	40%
AS Drafting & Design	0	0	N/A	N/A	N/A	N/A	N/A	N/A
BA English	2	2	2	100%	0	0%	1	50%
BS Organizational Leadership	0	0	N/A	N/A	N/A	N/A	N/A	N/A
BSE Secondary Education	1	2	1	100%	1	50%	1	100%
BAE English Education	0	0	N/A	N/A	N/A	N/A	N/A	N/A
BSE Mathematics Education	0	0	N/A	N/A	N/A	N/A	N/A	N/A

Source: Fall First-Time, Full-Time Enrollment as of Census Date

*Note: 2-Year retention rates baseline cohorts are derived from fall 2021 students retained in fall 2022. Then a percentage is taken from this group who were retained in fall 2023.

1- and 2-Year Retention Rates - School of Arts and Sciences

School/Program	Total Fall 2020 First-Time Full- Time Students	Total Fall 2021 First-Time Full- Time Students	1-Year Retention Rate				2-Year Retention Rate	
			FA20 Students Retained in FA21	% FA20 Students Retained in FA21	FA21 Students Retained in FA22	% FA21 Students Retained in FA22	FA20 Students Retained in FA22*	% FA20 Students Retained in FA22
Langston University	645	571	329	51%	322	56%	216	66%
School of Arts and Sciences	445	399	203	46%	235	59%	129	64%
AA General Studies	348	326	140	40%	191	59%	80	57%
AS Criminal Justice	23	12	9	39%	9	75%	9	100%
AS Electronics	1	0	0	0%	N/A	N/A	N/A	N/A
BA Broadcast Journalism	7	10	4	57%	6	60%	4	100%
BA Sociology	5	2	3	60%	1	50%	0	0%
BAE Music Education	20	9	15	75%	7	78%	11	73%
BS Biology	26	24	20	77%	11	46%	16	80%
BS Chemistry	1	0	1	100%	N/A	N/A	1	100%
BS Corrections	5	2	4	80%	1	50%	3	75%
BS Mathematics	0	1	N/A	N/A	1	100%	N/A	N/A
BS Technology	6	10	5	83%	5	50%	3	60%
AS Drafting & Design	0	0	N/A	0%	N/A	N/A	N/A	N/A
BA English	1	2	1	100%	2	100%	1	100%
BS Organizational Leadership	0	0	N/A	N/A	N/A	N/A	N/A	N/A
BSE Secondary Education	0	1	N/A	N/A	1	100%	N/A	N/A
BAE English Education	1	0	1	100%	N/A	N/A	1	100%
BSE Mathematics Education	1	0	0	0%	N/A	N/A	N/A	N/A

Source: Fall First-Time, Full-Time Enrollment as of Census Date

*Note: 2-Year retention rates baseline cohorts are derived from fall 2020 students retained in fall 2021. Then a percentage is calculated from this group who were retained in fall 2022.

School/Program	Total Fall 2021 First-Time Full- Time Students	Total Fall 2022 First-Time Full- Time Students	1-Year Retention Rate				2-Year Retention Rate	
			FA21 Students Retained in FA22	% FA21 Students Retained in FA22	FA22 Students Retained in FA23	% FA22 Students Retained in FA23	FA21 Students Retained in FA23*	% FA21 Students Retained in FA23
Langston University	571	544	322	56%	322	59%	247	77%
School of Business	39	107	18	46%	62	58%	14	78%
AS Financial Planning	0	3	N/A	N/A	2	67%	N/A	N/A
BBA Accounting	2	6	1	50%	4	67%	1	100%
BBA Business Administration	4	54	1	25%	28	52%	1	100%
BBA Economics	1	1	0	0%	1	100%	N/A	N/A
BBA Management	24	25	11	46%	12	48%	8	73%
BS Computer Science	6	11	4	67%	8	73%	3	75%
BBA Finance	1	7	0	0%	7	100%	N/A	N/A
BBA Management Information Systems	0	0	N/A	N/A	N/A	N/A	N/A	N/A
BS Accountancy	0	0	N/A	N/A	N/A	N/A	N/A	N/A
BBA Supply Chain Management	1	0	1	100%	N/A	N/A	1	100%

Source: Fall First-Time, Full-Time Enrollment as of Census Date

*Note: 2-Year retention rates baseline cohorts are derived from fall 2021 students retained in fall 2022. Then a percentage is taken from this group who were retained in fall 2023.

School/Program	Total Fall 2020 First-Time Full- Time Students	Total Fall 2021 First-Time Full- Time Students	1-Year Retention Rate				2-Year Retention Rate	
			FA20 Students Retained in FA21	% FA20 Students Retained in FA21	FA21 Students Retained in FA22	% FA21 Students Retained in FA22	FA20 Students Retained in FA22*	% FA20 Students Retained in FA22
Langston University	645	571	329	51%	322	56%	216	66%
School of Business	45	39	22	49%	18	46%	12	55%
AS Financial Planning	1	0	0	0%	N/A	N/A	N/A	0%
BBA Accounting	2	2	2	100%	1	50%	2	100%
BBA Business Administration	10	4	3	30%	1	25%	0	0%
BBA Economics	0	1	N/A	N/A	0	0%	N/A	N/A
BBA Management	18	24	7	39%	11	46%	5	71%
BS Computer Science	9	6	6	67%	4	67%	3	50%
BBA Finance	3	1	2	67%	0	0%	2	100%
BBA Management Information Systems	0	0	N/A	N/A	N/A	N/A	N/A	N/A
BS Accountancy	2	0	2	100%	N/A	N/A	0	0%
	0	1	N/A	N/A	1	100%	N/A	N/A

Source: Fall First-Time, Full-Time Enrollment as of Census Date

*Note: 2-Year retention rates baseline cohorts are derived from fall 2020 students retained in fall 2021. Then a percentage is calculated from this group who were retained in fall 2022.

1- and 2-Year Retention Rates - School of Education and Behavioral Sciences

School/Program	Total Fall 2021 First-Time Full- Time Students	Total Fall 2022 First-Time Full- Time Students	1-Year Retention Rate				2-Year Retention Rate	
			FA21 Students Retained in FA22	% FA21 Students Retained in FA22	FA22 Students Retained in FA23	% FA22 Students Retained in FA23	FA21 Students Retained in FA23*	% FA21 Students Retained in FA23
Langston University	571	544	322	56%	322	59%	247	77%
School of Education and Applied Sciences	36	100	12	33%	55	55%	8	67%
BA Liberal Education	0	0	N/A	N/A	N/A	N/A	0	N/A
BA Psychology	17	46	5	29%	27	59%	3	60%
BS Health, PE and Recreation	9	44	4	44%	23	52%	3	75%
BS Rehabilitation Services	0	0	N/A	N/A	N/A	N/A	N/A	N/A
BSE Elementary Education	6	8	1	17%	5	63%	1	100%
BSE Health, PE and Rec Educ	4	0	2	50%	N/A	N/A	1	50%
BSE Special Education	0	2	N/A	N/A	0	0%	N/A	N/A

Source: Fall First-Time, Full-Time Enrollment as of Census Date

*Note: 2-Year retention rates baseline cohorts are derived from fall 2021 students retained in fall 2022. Then a percentage is taken from this group who were retained in fall 2023.

School/Program	Total Fall 2020 First-Time Full- Time Students	Total Fall 2021 First-Time Full- Time Students	1-Year Retention Rate				2-Year Retention Rate	
			FA20 Students Retained in FA21	% FA20 Students Retained in FA21	FA21 Students Retained in FA22	% FA21 Students Retained in FA22	FA20 Students Retained in FA22*	% FA20 Students Retained in FA22
Langston University	645	571	329	51%	322	56%	216	66%
School of Education and Applied Sciences	62	36	40	65%	12	33%	24	60%
BA Liberal Education	2	0	2	100%	N/A	N/A	1	50%
BA Psychology	25	17	16	64%	5	29%	10	63%
BS Health, PE and Recreation	22	9	12	55%	4	44%	7	58%
BS Rehabilitation Services	0	0	N/A	N/A	N/A	N/A	N/A	N/A
BSE Elementary Education	10	6	7	70%	1	17%	4	57%
BSE Health, PE and Rec Educ	1	4	1	100%	2	50%	N/A	N/A
BSE Special Education	2	0	2	100%	N/A	N/A	2	100%

Source: Fall First-Time, Full-Time Enrollment as of Census Date

*Note: 2-Year retention rates baseline cohorts are derived from fall 2020 students retained in fall 2021. Then a percentage is calculated from this group who were retained in fall 2022.

1- and 2-Year Retention Rates - School of Nursing and Health Professions

School/Program	Total Fall 2021 First-Time Full- Time Students	Total Fall 2022 First-Time Full- Time Students	1-Year Retention Rate				2-Year Retention Rate	
			FA21 Students Retained in FA22	% FA21 Students Retained in FA22	FA22 Students Retained in FA23	% FA22 Students Retained in FA23	FA21 Students Retained in FA23*	% FA21 Students Retained in FA23
Langston University	571	544	322	56%	322	59%	247	77%
School of Nursing and Health Professions	61	106	35	57%	60	57%	26	74%
BS Health Administration	0	6	N/A	N/A	3	50%	N/A	N/A
BSN Nursing	59	94	34	58%	53	56%	25	74%
Public health	2	6	1	50%	4	67%	1	100%

Source: Fall First-Time, Full-Time Enrollment as of Census Date

*Note: 2-Year retention rates baseline cohorts are derived from fall 2021 students retained in fall 2022. Then a percentage is taken from this group who were retained in fall 2023.

School/Program	Total Fall 2020 First-Time Full- Time Students	Total Fall 2021 First-Time Full- Time Students	1-Year Retention Rate				2-Year Retention Rate	
			FA20 Students Retained in FA21	% FA20 Students Retained in FA21	FA21 Students Retained in FA22	% FA21 Students Retained in FA22	FA20 Students Retained in FA22*	% FA20 Students Retained in FA22
Langston University	645	571	329	51%	322	56%	216	66%
School of Nursing and Health Professions	86	61	52	60%	35	57%	42	81%
BS Health Administration	5	0	2	40%	N/A	N/A	2	100%
BSN Nursing	81	59	50	62%	34	58%	40	80%
Public health	0	2	0	N/A	1	50%	N/A	N/A

Source: Fall First-Time, Full-Time Enrollment as of Census Date

*Note: 2-Year retention rates baseline cohorts are derived from fall 2020 students retained in fall 2021. Then a percentage is calculated from this group who were retained in fall 2022.